

February 2023

London Luton Airport Expansion

Planning Inspectorate Scheme Ref: TR020001

Volume 5 Environmental Statement and Related Documents
5.03 Chapter 10 Cultural Heritage Figures 10.1 - 10.9

Application Document Ref: TR020001/APP/5.03
APFP Regulation: 5(2)(a)

The Planning Act 2008

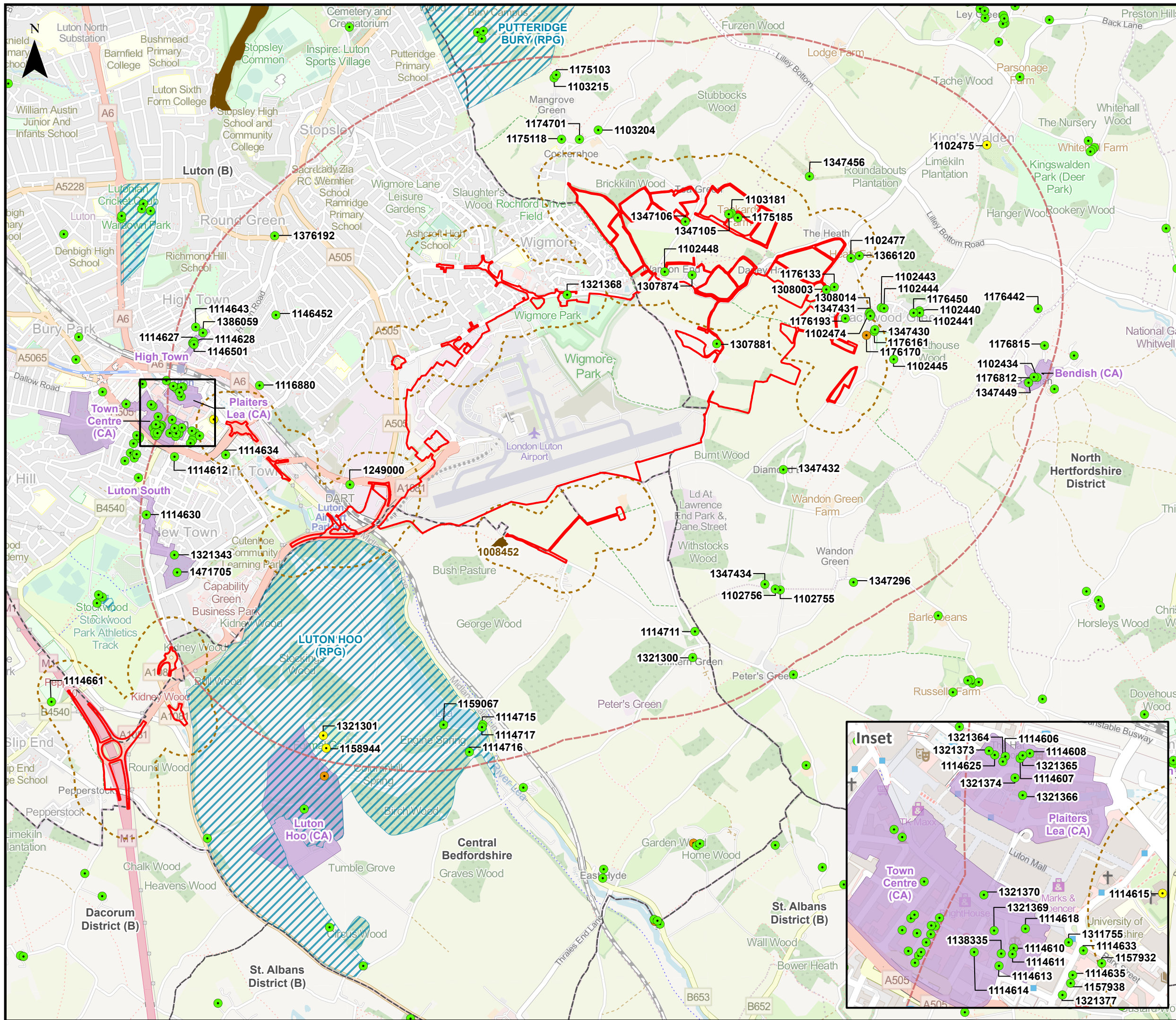
The Infrastructure Planning (Applications: Prescribed Forms and Procedure) Regulations 2009

London Luton Airport Expansion Development Consent Order 202x

5.03 ENVIRONMENTAL STATEMENT CHAPTER 10 CULTURAL HERITAGE FIGURES 10.1 – 10.9

Regulation number:	Regulation 5(2)(a)
Planning Inspectorate Scheme Reference:	TR020001
Document Reference:	TR020001/APP/5.03
Author:	Luton Rising

Version	Date	Status of Version
Issue 01	February 2023	Application issue



This drawing may contain mapping by permission of Ordnance Survey on behalf of HMSO © Crown Copyright and database rights 2022 Ordnance Survey 0100031673

All structure positions are indicative. The proposed works will be subject to detailed design development. The changes will be within limits of deviation specified in the Development Consent Order.

Legend

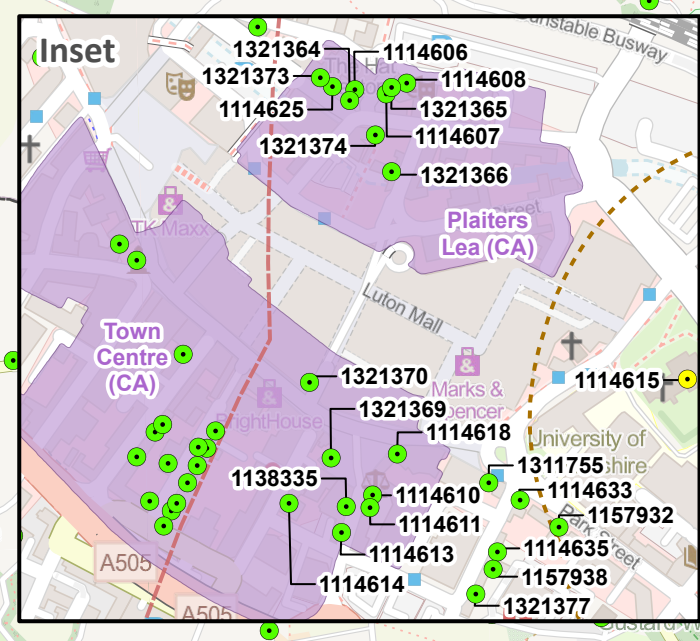
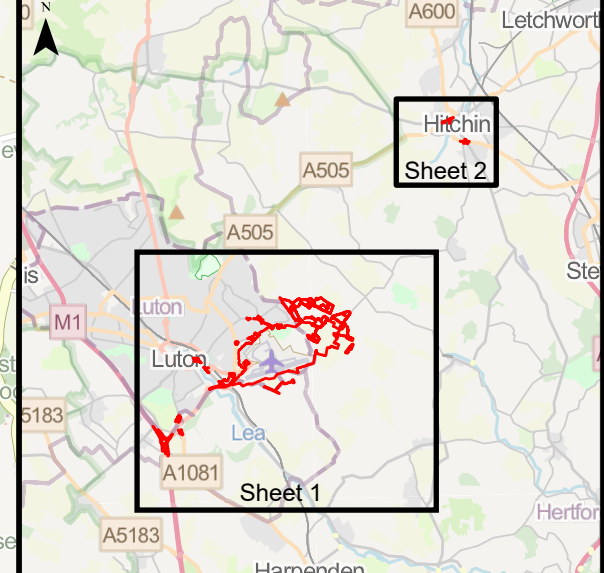
- Order Limits
- 250m Off-site Highways Interventions and Planting Study Area
- 2km Main Application Site Study Area
- Local Authority Boundaries
- Scheduled Monument
- Registered Park And Garden (RPG)
- Conservation Area (CA)

Listed Buildings - Grade

- I
- II*
- II

Map data © OpenStreetMap contributors, Microsoft, Facebook, Inc. and its affiliates, Esri Community Maps contributors, Map layer by Esri. © Historic England 2022. Contains Ordnance Survey data © Crown copyright and database right 2022. The Historic England GIS Data contained in this material was obtained on August 2022. The most publicly available up to date Historic England GIS Data can be obtained from HistoricEngland.org.uk. Contains Ordnance Survey Data © Crown Copyright and database right 2022.

First Issue	MAB	JW	CS	31/01/23	P01
Revision History	Drawn	Checked	Approved	Date	Rev.



Luton Rising
 Our airport. Our community. Our planet.
 Luton Rising
 Hart House Business Centre
 Kimpton Road, Luton, LU2 0LA
 www.lutonrising.org.uk

London Luton Airport Expansion Development Consent Order

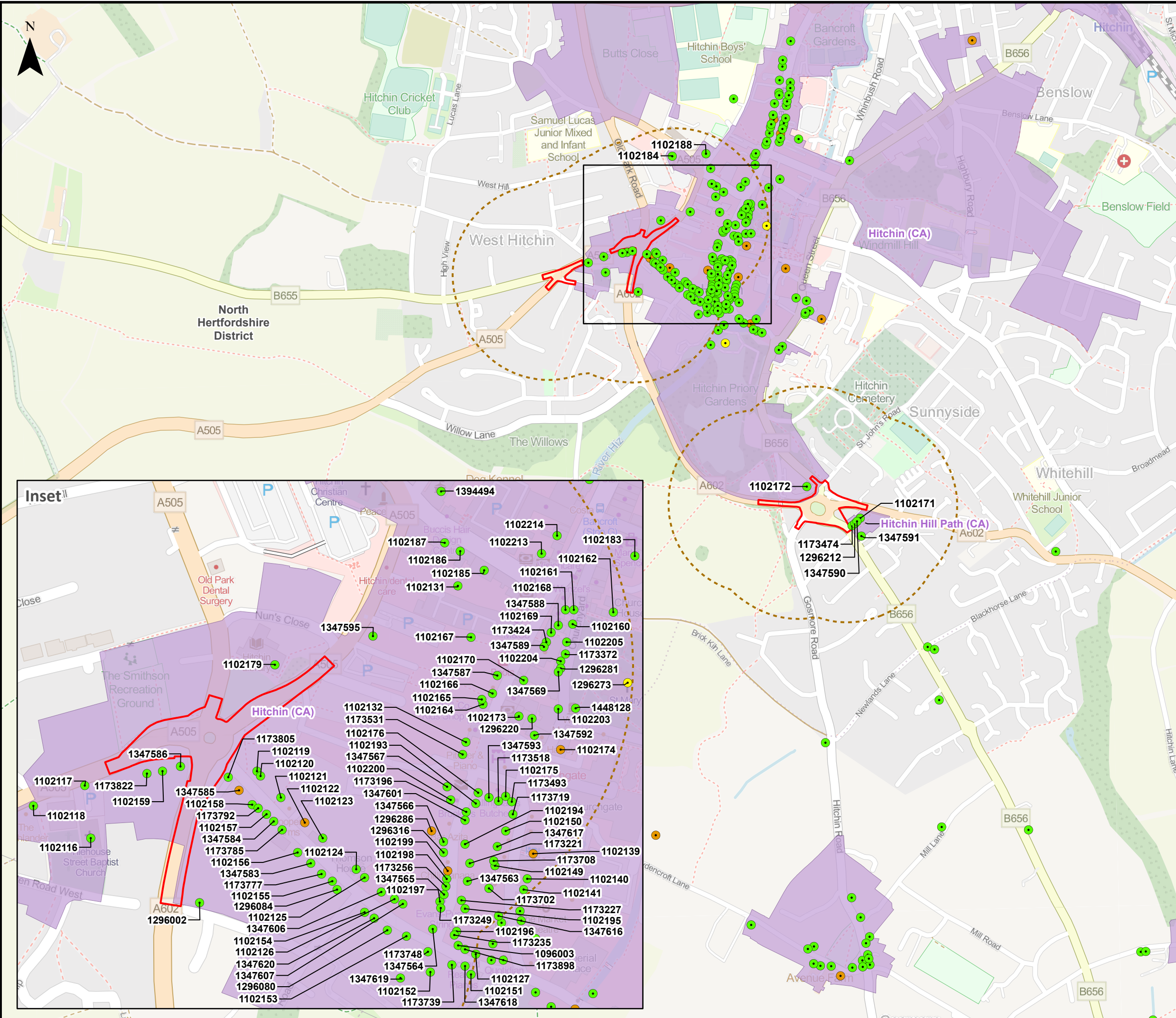
Drawing Title: **Figure 10.1 Location of Designated Cultural Heritage Assets (Plan 1 of 2)**

Purpose of issue				Suitability	
SUITABLE FOR INFORMATION				S2	
Drawn	Checked	Approved	Date	Scale	Size
MAB	JW	CS	31/01/23	1:30,000	A3

DCO Application Ref.	APFP Regulation	DCO Document Ref.
TR020001	APFP 5(2)(a)	TR020001/APP/5.03

Drawing Number	Revision
LLADCO-3C-AEC-00-00-DR-LM-0001	P01

Project - Phase - Originator - Asset/Zone - Sub Asset - Type- Discp. - Number



This drawing may contain mapping by permission of Ordnance Survey on behalf of HMSO © Crown Copyright and database rights 2022 Ordnance Survey 0100031673

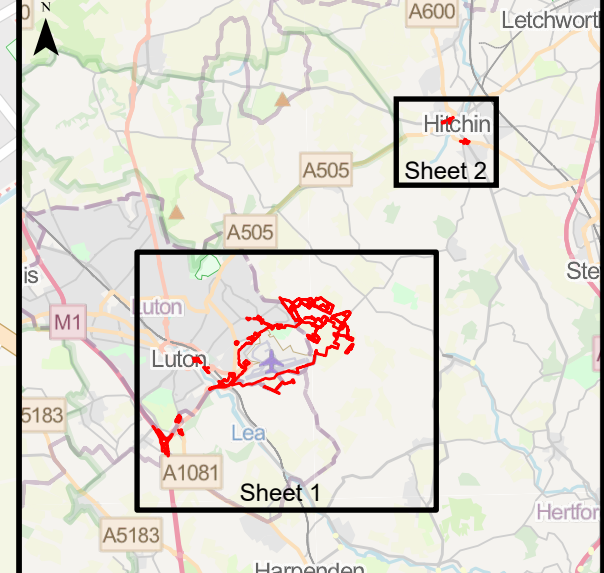
All structure positions are indicative. The proposed works will be subject to detailed design development. The changes will be within limits of deviation specified in the Development Consent Order.

Legend

- Order Limits
 - 250m Off-site Highways Interventions and Planting Study Area
 - Local Authority Boundaries
 - Conservation Area (CA)
- Listed Buildings - Grade**
- I
 - II*
 - II

Map data © OpenStreetMap contributors, Microsoft, Facebook, Inc. and its affiliates, Esri Community Maps contributors, Map layer by Esri. © Historic England 2022. Contains Ordnance Survey data © Crown copyright and database right 2022. The Historic England GIS Data contained in this material was obtained on August 2022. The most publicly available up to date Historic England GIS Data can be obtained from HistoricEngland.org.uk. Contains Ordnance Survey Data © Crown Copyright and database right 2022.

First Issue	MAB	JW	CS	31/01/23	P01
Revision History	Drawn	Checked	Approved	Date	Rev.



Luton Rising
 Our airport. Our community. Our planet.
 Luton Rising
 Hart House Business Centre
 Kimpton Road, Luton, LU2 0LA
 www.lutonrising.org.uk

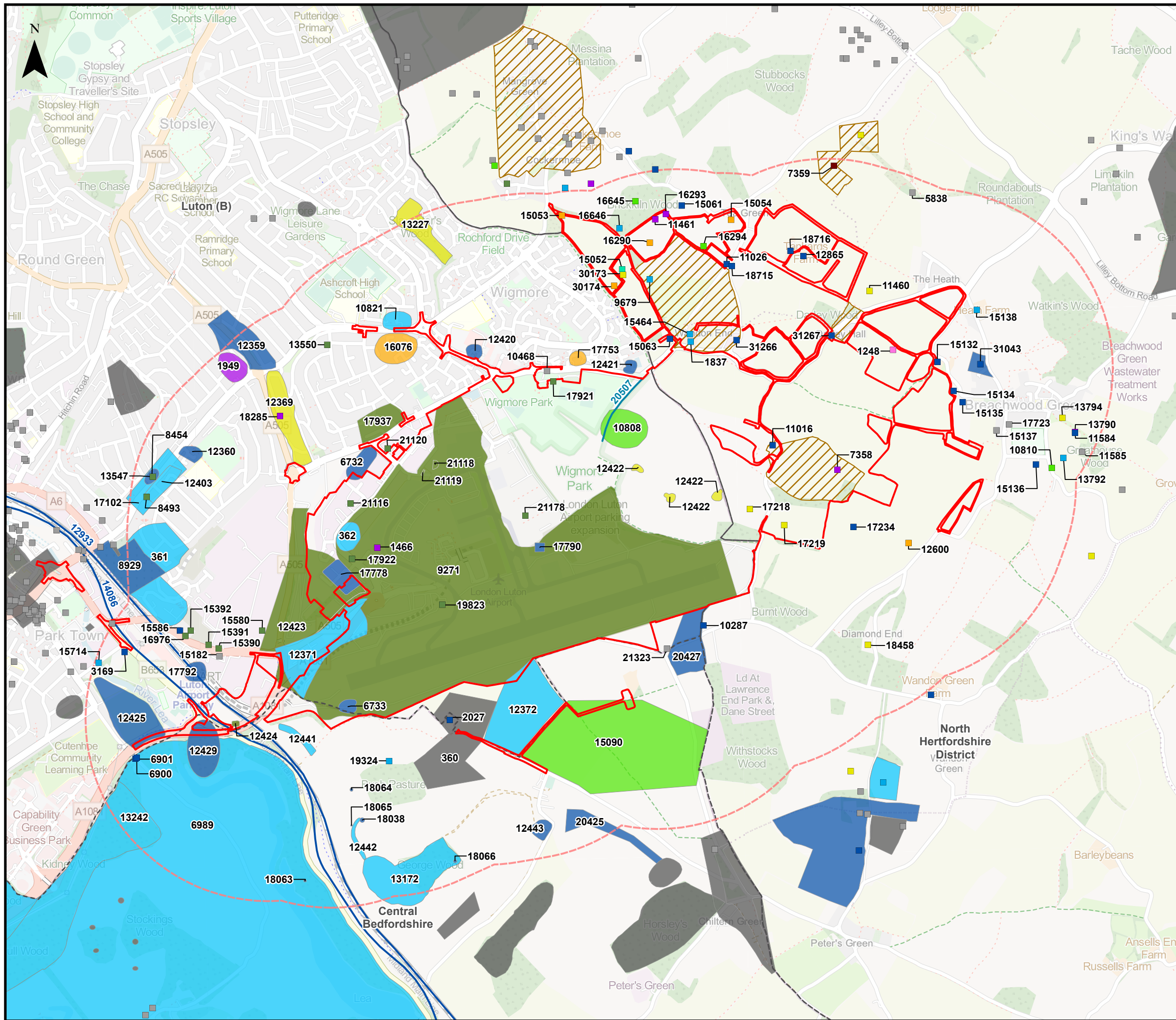
London Luton Airport Expansion Development Consent Order

Drawing Title: **Figure 10.2 Location of Designated Cultural Heritage Assets (Plan 2 of 2)**

Purpose of issue				Suitability		
SUITABLE FOR INFORMATION				S2		
Drawn	Checked	Approved	Date	Scale	Size	
MAB	JW	CS	31/01/23	1:10,000	A3	

DCO Application Ref.	APFP Regulation	DCO Document Ref.
TR020001	APFP 5(2)(a)	TR020001/APP/5.03

Drawing Number	Revision
LLADCO-3C-AEC-00-00-DR-LM-0002	P01
Project - Phase - Originator - Asset/Zone - Sub Asset - Type- Discp. - Number	



This drawing may contain mapping by permission of Ordnance Survey on behalf of HMSO © Crown Copyright and database rights 2022 Ordnance Survey 0100031673

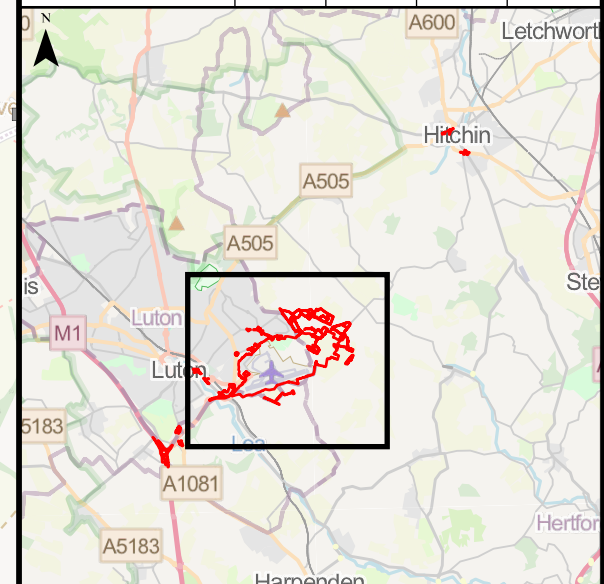
All structure positions are indicative. The proposed works will be subject to detailed design development. The changes will be within limits of deviation specified in the Development Consent Order.

Legend

- Order Limits
- 1km Main Application Site Study Area
- Local Authority Boundaries
- Area of Archaeological Significance
- Mesolithic to Late Bronze Age
- Neolithic or Neolithic to Late Bronze Age
- Late Iron Age
- Late Iron Age - Roman
- Roman
- Early medieval
- Medieval, and medieval to post-medieval
- Post-medieval
- Modern
- Unknown
- Undated
- Unknown
- Undated
- Non-Designated Heritage Asset (Line)**
- Medieval and medieval to post-medieval
- Post-medieval
- Unknown
- Non-Designated Heritage Asset (Point)**
- Mesolithic to Late Bronze Age
- Neolithic or Neolithic to Late Bronze Age
- Late Iron Age
- Late Iron Age - Roman
- Roman
- Early medieval
- Medieval, and medieval to post-medieval
- Post-medieval
- Modern
- Unknown
- Undated

Map data © OpenStreetMap contributors, Microsoft, Facebook, Inc. and its affiliates, Esri Community Maps contributors, Map layer by Esri. Contains Ordnance Survey Data © Crown Copyright and database right 2022. HER Data © Hertfordshire County Council 2020. © Central Bedfordshire Council 2020.

First Issue	MAB	JW	CS	31/01/23	P01
Revision History	Drawn	Checked	Approved	Date	Rev.

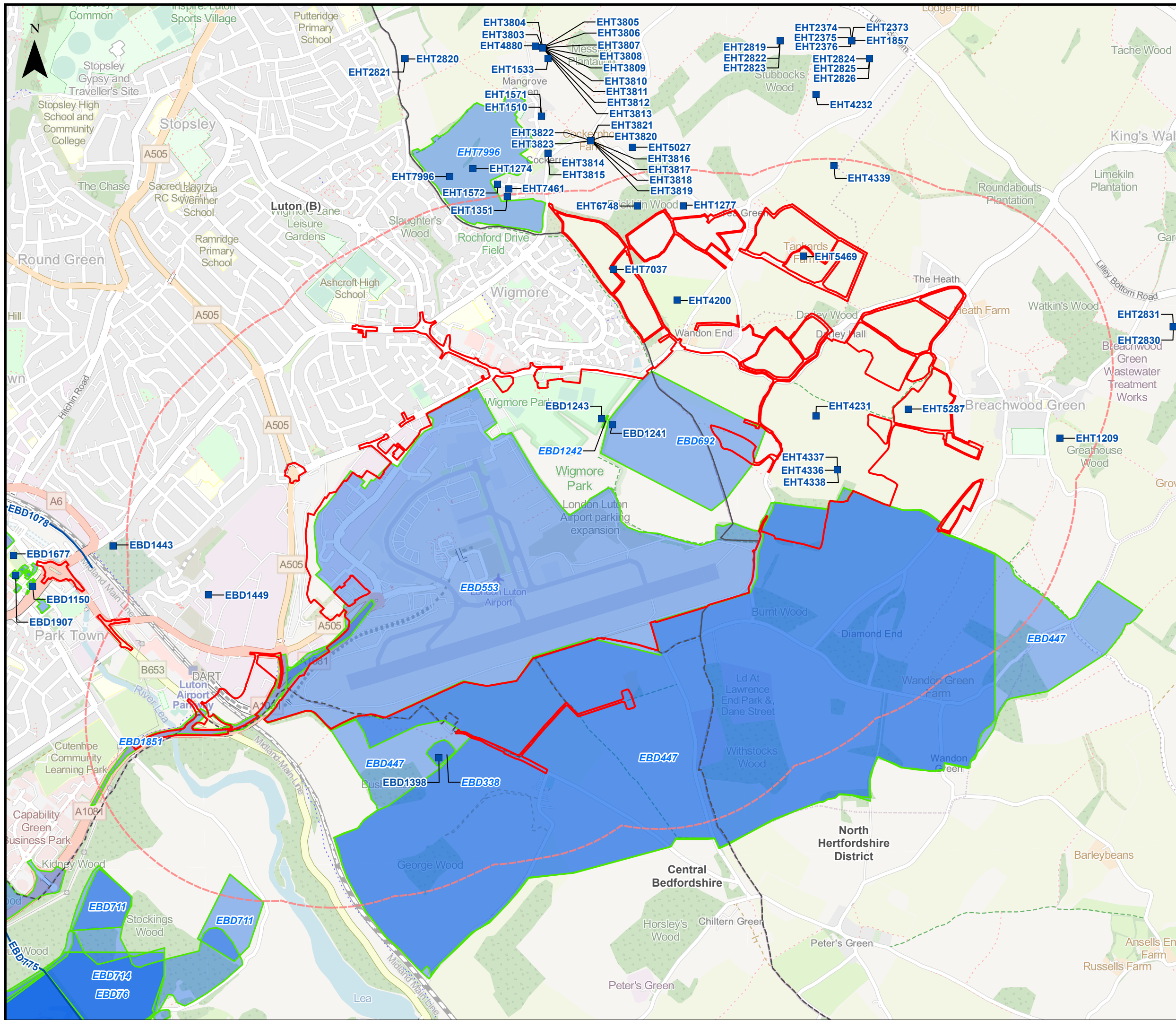


Luton Rising
 Our airport. Our community. Our planet.
 Luton Rising
 Hart House Business Centre
 Kimpton Road, Luton, LU2 0LA
 www.lutonrising.org.uk

London Luton Airport Expansion Development Consent Order

Drawing Title
**Figure 10.3
 Location of Non-Designated Cultural Heritage Assets**

Purpose of issue				Suitability	
SUITABLE FOR INFORMATION				S2	
Drawn	Checked	Approved	Date	Scale	Size
MAB	JW	CS	31/01/23	1:20,000	A3
DCO Application Ref.		APFP Regulation		DCO Document Ref.	
TR020001		APFP 5(2)(a)		TR020001/APP/5.03	
Drawing Number					Revision
LLADCO-3C-AEC-00-00-DR-LM-0003					P01
Project - Phase - Originator - Asset/Zone - Sub Asset - Type- Discp. - Number					

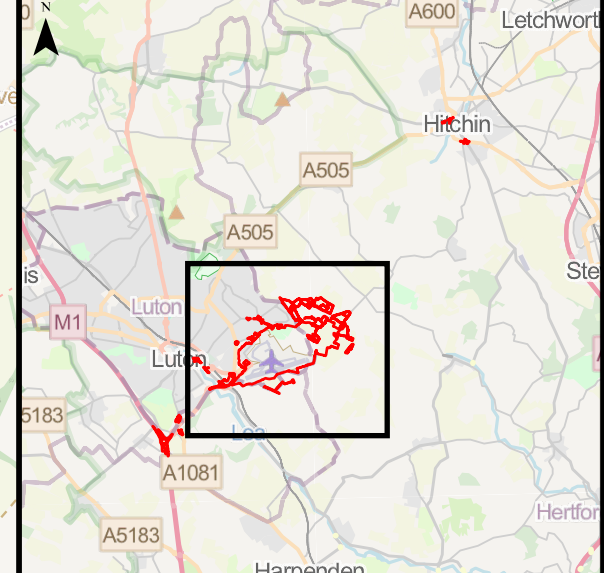


This drawing may contain mapping by permission of Ordnance Survey on behalf of HMSO © Crown Copyright and database rights 2022 Ordnance Survey 0100031673
 All structure positions are indicative. The proposed works will be subject to detailed design development. The changes will be within limits of deviation specified in the Development Consent Order.

- Legend**
- Order Limits
 - 1km Main Application Site Study Area
 - Local Authority Boundaries
 - Archaeological Fieldwork Event (Point)
 - Archaeological Fieldwork Event (Line)
 - Archaeological Fieldwork Event (Area)*

*Darker blue areas indicate that there is multiple Archaeological Fieldwork Events overlapping.
 Map data © OpenStreetMap contributors, Microsoft, Facebook, Inc. and its affiliates, Esri Community Maps contributors, Map layer by Esri. Contains Ordnance Survey Data © Crown Copyright and database right 2022. HER Data © Hertfordshire County Council 2020. © Central Bedfordshire Council 2020.

First Issue	MAB	JW	CS	31/01/23	P01
Revision History	Drawn	Checked	Approved	Date	Rev.



Luton Rising
 Our airport. Our community. Our planet.
 Luton Rising
 Hart House Business Centre
 Kimpton Road, Luton, LU2 0LA
 www.lutonrising.org.uk

**London Luton Airport Expansion
 Development Consent Order**

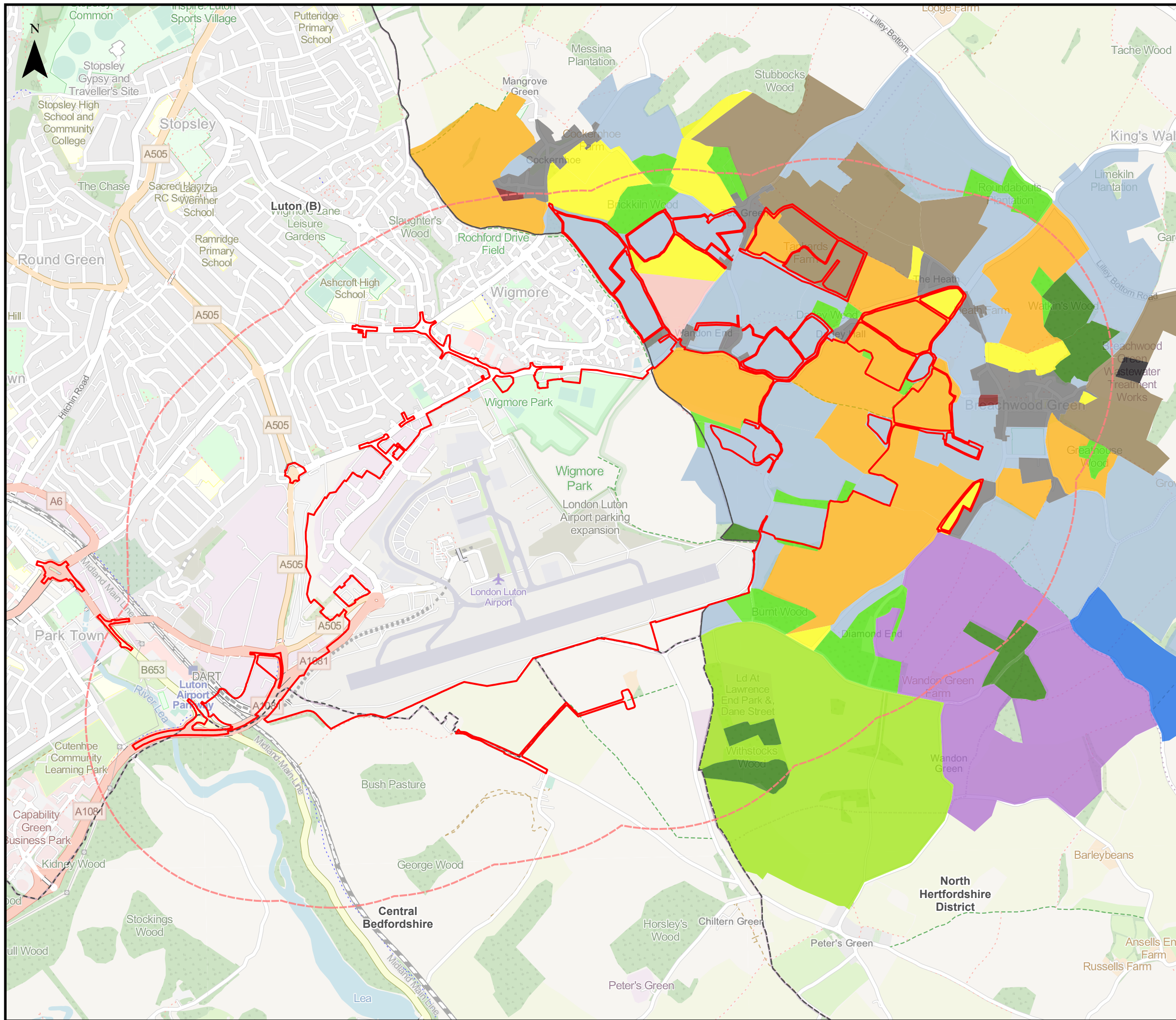
Drawing Title
**Figure 10.4
 Location of Archaeological
 Fieldwork Events**

Purpose of issue SUITABLE FOR INFORMATION				Suitability S2	
Drawn MAB	Checked JW	Approved CS	Date 31/01/23	Scale 1:20,000	Size A3

DCO Application Ref. TR020001	APFP Regulation APFP 5(2)(a)	DCO Document Ref. TR020001/APP/5.03
----------------------------------	---------------------------------	--

Drawing Number LLADCO-3C-AEC-00-00-DR-LM-0004	Revision P01
--	-----------------

Project - Phase - Originator - Asset/Zone - Sub Asset - Type- Discp. - Number



This drawing may contain mapping by permission of Ordnance Survey on behalf of HMSO © Crown Copyright and database rights 2022 Ordnance Survey 0100031673

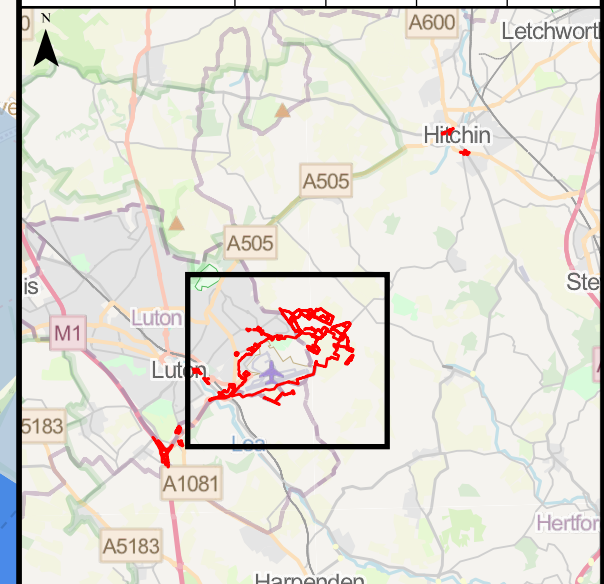
All structure positions are indicative. The proposed works will be subject to detailed design development. The changes will be within limits of deviation specified in the Development Consent Order.

Legend

- Order Limits
- 1km Main Application Site Study Area
- Local Authority Boundaries
- Historic Landscape Characterisation**
- "20thC" Enclosure
- 18th-20th Century Woodland Plantation
- Allotments
- Ancient Woodland
- Built-Up Areas - Urban Development
- Industrial
- Informal Parkland
- Irregular Enclosure
- Irregular Sinuous Enclosure
- Leisure / Recreation
- Piecemeal Enclosure by Agreement
- Post 1950 Boundary Loss
- Post 1950 Boundary Loss - With Relict Elements

Map data © OpenStreetMap contributors, Microsoft, Facebook, Inc. and its affiliates, Esri Community Maps contributors, Map layer by Esri. Contains Ordnance Survey Data © Crown Copyright and database right 2022. HER Data © Hertfordshire County Council 2020.

First Issue	MAB	JW	CS	31/01/23	P01
Revision History	Drawn	Checked	Approved	Date	Rev.



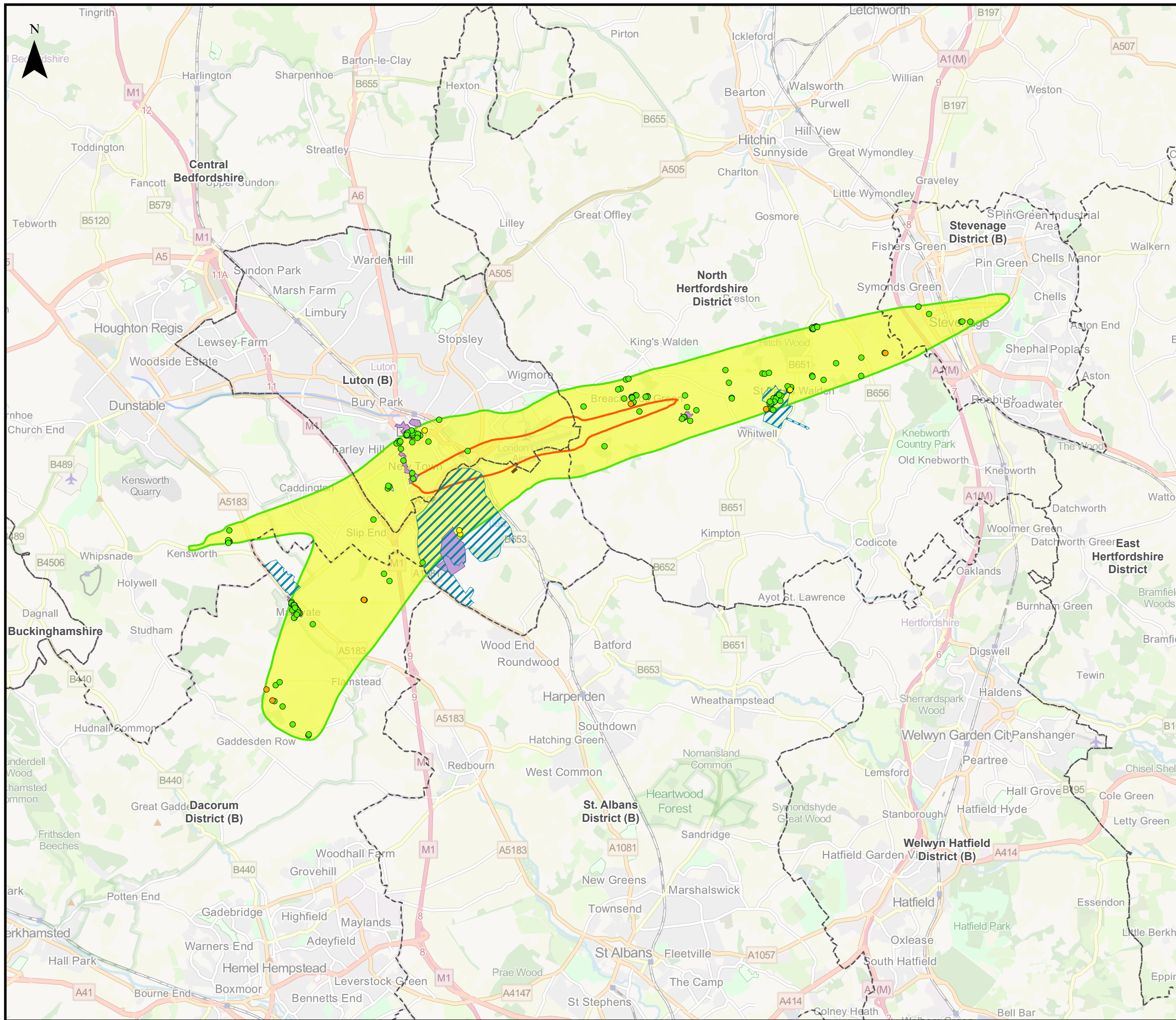
Luton Rising
 Our airport. Our community. Our planet.
 Luton Rising
 Hart House Business Centre
 Kimpton Road, Luton, LU2 0LA
 www.lutonrising.org.uk

**London Luton Airport Expansion
 Development Consent Order**

Drawing Title

Figure 10.5
 Historic Landscape Characterisation

Purpose of issue				Suitability	
SUITABLE FOR INFORMATION				S2	
Drawn	Checked	Approved	Date	Scale	Size
MAB	JW	CS	31/01/23	1:20,000	A3
DCO Application Ref.		APFP Regulation		DCO Document Ref.	
TR020001		APFP 5(2)(a)		TR020001/APP/5.03	
Drawing Number					Revision
LLADCO-3C-AEC-00-00-DR-LM-0005					P01
Project - Phase - Originator - Asset/Zone - Sub Asset - Type- Discp. - Number					



This drawing may contain mapping by permission of Ordnance Survey on behalf of HMSO © Crown Copyright and database rights 2022 Ordnance Survey 0100031673

All structure positions are indicative. The proposed works will be subject to detailed design development. The changes will be within limits of deviation specified in the Development Consent Order.

- Legend**
- Local Authority Boundaries
 - Conservation Areas (CA)
 - Registered Park And Garden (RPG)
 - Scheduled Monument

- Listed Buildings - Grade**
- I
 - II*
 - II

- Change in 2027 Do-Something - Do-Minimum Daytime LAeq,16h Air Noise Contours in Decibels (dB)**
- 0.1 to 0.9 dB
 - 1.0 to 1.9 dB
 - 2.0 to 2.9 dB
 - 3.0 dB or more

- Air Noise Contours in Decibels (dB) (2027 Do-something Daytime LAeq,16h)**
- 51dB
 - 63dB

Map data © OpenStreetMap contributors, Microsoft, Facebook, Inc. and its affiliates, Esri Community Maps contributors, Map layer by Esri. © Historic England 2022. Contains Ordnance Survey data © Crown copyright and database right 2022. The Historic England GIS Data contained in this material was obtained on August 2022. The most publicly available up to date Historic England GIS Data can be obtained from HistoricEngland.org.uk. Contains Ordnance Survey Data © Crown Copyright and database right 2022.

First Issue	MAB	JW	CS	31/01/23	P01
Revision History	Drawn	Checked	Approved	Date	Rev.

Luton Rising Our airport. Our community. Our planet.

Luton Rising
Hart House Business Centre
Kimpton Road, Luton, LU2 0LA
www.lutonrising.org.uk

London Luton Airport Expansion Development Consent Order

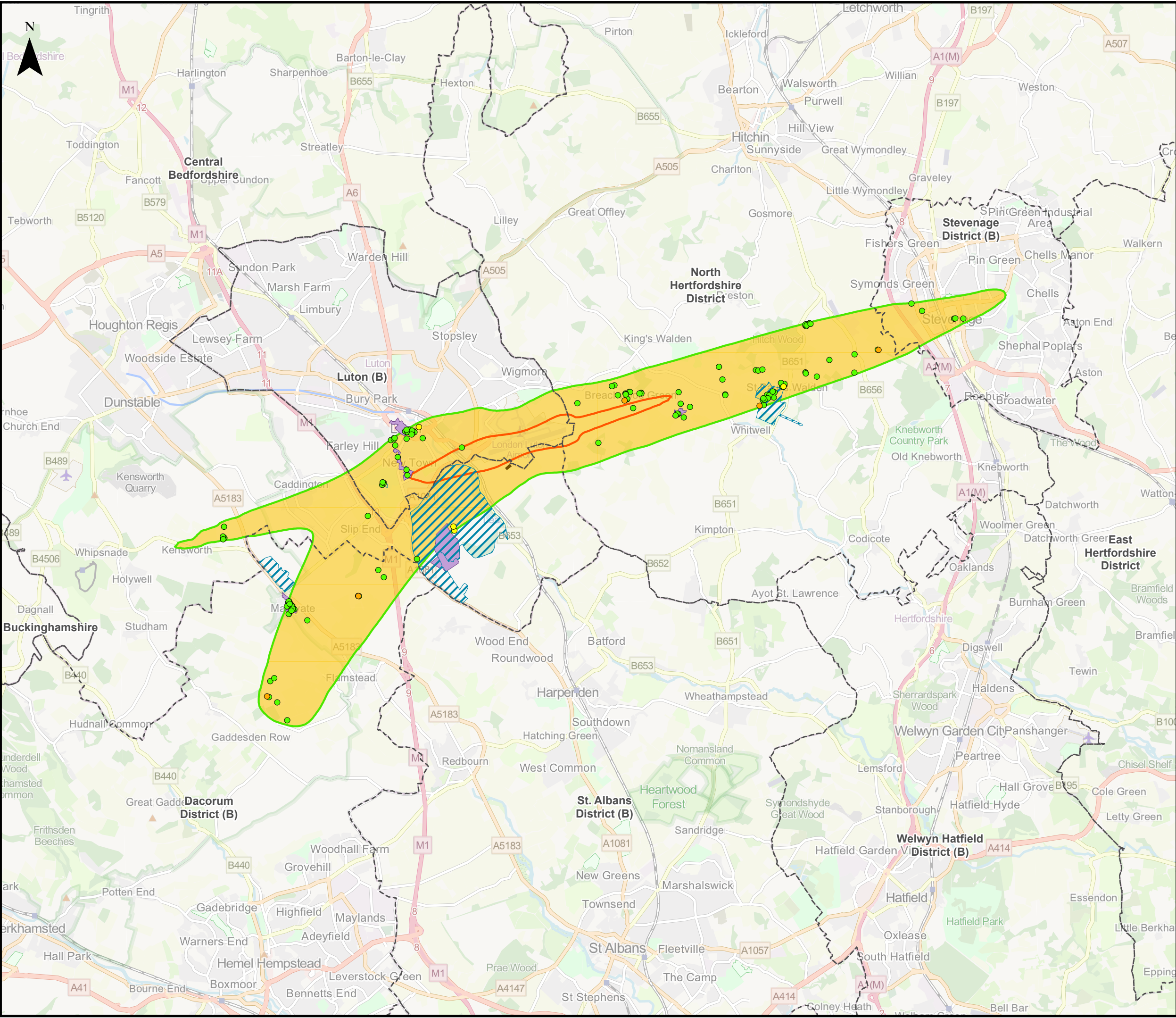
Drawing Title
Figure 10.6 Designated Heritage Assets Change in 2027 Do-Something - Do-Minimum Daytime LAeq,16h Air Noise Contours

Purpose of issue SUITABLE FOR INFORMATION				Suitability S2	
Drawn	Checked	Approved	Date	Scale	Size
MAB	JW	CS	31/01/23	1:95,000	A3

DCO Application Ref. TR020001	APFP Regulation APFP 5(2)(a)	DCO Document Ref. TR020001/APP/5.03
----------------------------------	---------------------------------	--

Drawing Number LLADCO-3C-AEC-00-00-DR-LM-0006	Revision P01
--	-----------------

Project - Phase - Originator - Asset/Zone - Sub Asset - Type- Discp. - Number



This drawing may contain mapping by permission of Ordnance Survey on behalf of HMSO © Crown Copyright and database rights 2022 Ordnance Survey 0100031673

All structure positions are indicative. The proposed works will be subject to detailed design development. The changes will be within limits of deviation specified in the Development Consent Order.

Legend

- Local Authority Boundaries
- Conservation Areas (CA)
- Registered Park And Garden (RPG)
- Scheduled Monument

Listed Buildings - Grade

- I
- II*
- II

Change in 2039 Do-Something - Do-Minimum Daytime LAeq,16h Air Noise Contours in Decibels (dB)

- 0.1 to 0.9 dB
- 1.0 to 1.9 dB
- 2.0 to 2.9 dB
- 3.0 dB or more

Air Noise Contours in Decibels (dB) (2039 Do-something Daytime LAeq,16h)

- 51dB
- 63dB

Map data © OpenStreetMap contributors, Microsoft, Facebook, Inc. and its affiliates, Esri Community Maps contributors, Map layer by Esri. © Historic England 2022. Contains Ordnance Survey data © Crown copyright and database right 2022. The Historic England GIS Data contained in this material was obtained on August 2022. The most publicly available up to date Historic England GIS Data can be obtained from HistoricEngland.org.uk. Contains Ordnance Survey Data © Crown Copyright and database right 2022.

First Issue	MAB	JW	CS	31/01/23	P01
Revision History	Drawn	Checked	Approved	Date	Rev.

Luton Rising Our airport. Our community. Our planet.

Luton Rising
Hart House Business Centre
Kimpton Road, Luton, LU2 0LA
www.lutonrising.org.uk

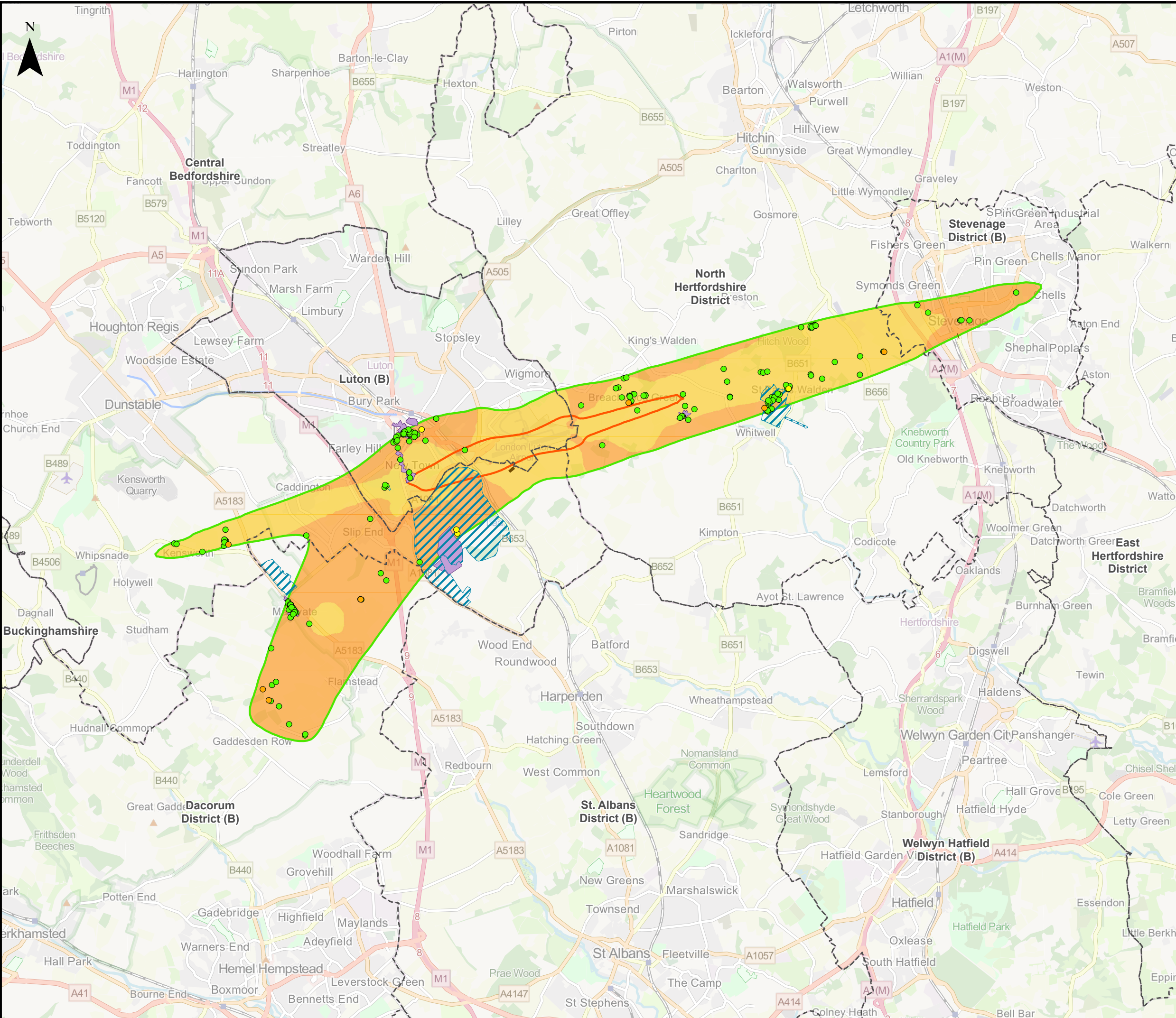
London Luton Airport Expansion Development Consent Order

Drawing Title
Figure 10.7 Designated Heritage Assets Change in 2039 Do-Something - Do-Minimum Daytime LAeq,16h Air Noise Contours

Purpose of issue				Suitability	
SUITABLE FOR INFORMATION				S2	
Drawn	Checked	Approved	Date	Scale	Size
MAB	JW	CS	31/01/23	1:95,000	A3

DCO Application Ref.	APFP Regulation	DCO Document Ref.
TR020001	APFP 5(2)(a)	TR020001/APP/5.03

Drawing Number	Revision
LLADCO-3C-AEC-00-00-DR-LM-0008	P01
Project - Phase - Originator - Asset/Zone - Sub Asset - Type- Discp. - Number	



This drawing may contain mapping by permission of Ordnance Survey on behalf of HMSO © Crown Copyright and database rights 2022 Ordnance Survey 0100031673

All structure positions are indicative. The proposed works will be subject to detailed design development. The changes will be within limits of deviation specified in the Development Consent Order.

Legend

- Local Authority Boundaries
- Conservation Areas (CA)
- Registered Park And Garden (RPG)
- Scheduled Monument

Listed Buildings - Grade

- I
- II*
- II

Change in 2043 Do-Something - Do-Minimum Daytime LAeq,16h Air Noise Contours in Decibels (dB)

- 0.1 to 0.9 dB
- 1.0 to 1.9 dB
- 2.0 to 2.9 dB
- 3.0 dB or more

Air Noise Contours in Decibels (dB) (2043 Do-something Daytime LAeq,16h)

- 51dB
- 63dB

Map data © OpenStreetMap contributors, Microsoft, Facebook, Inc. and its affiliates, Esri Community Maps contributors, Map layer by Esri. © Historic England 2022. Contains Ordnance Survey data © Crown copyright and database right 2022. The Historic England GIS Data contained in this material was obtained on August 2022. The most publicly available up to date Historic England GIS Data can be obtained from HistoricEngland.org.uk. Contains Ordnance Survey Data © Crown Copyright and database right 2022.

First Issue	MAB	JW	CS	31/01/23	P01
Revision History	Drawn	Checked	Approved	Date	Rev.

Luton Rising Our airport. Our community. Our planet.

Luton Rising
Hart House Business Centre
Kimpton Road, Luton, LU2 0LA
www.lutonrising.org.uk

London Luton Airport Expansion Development Consent Order

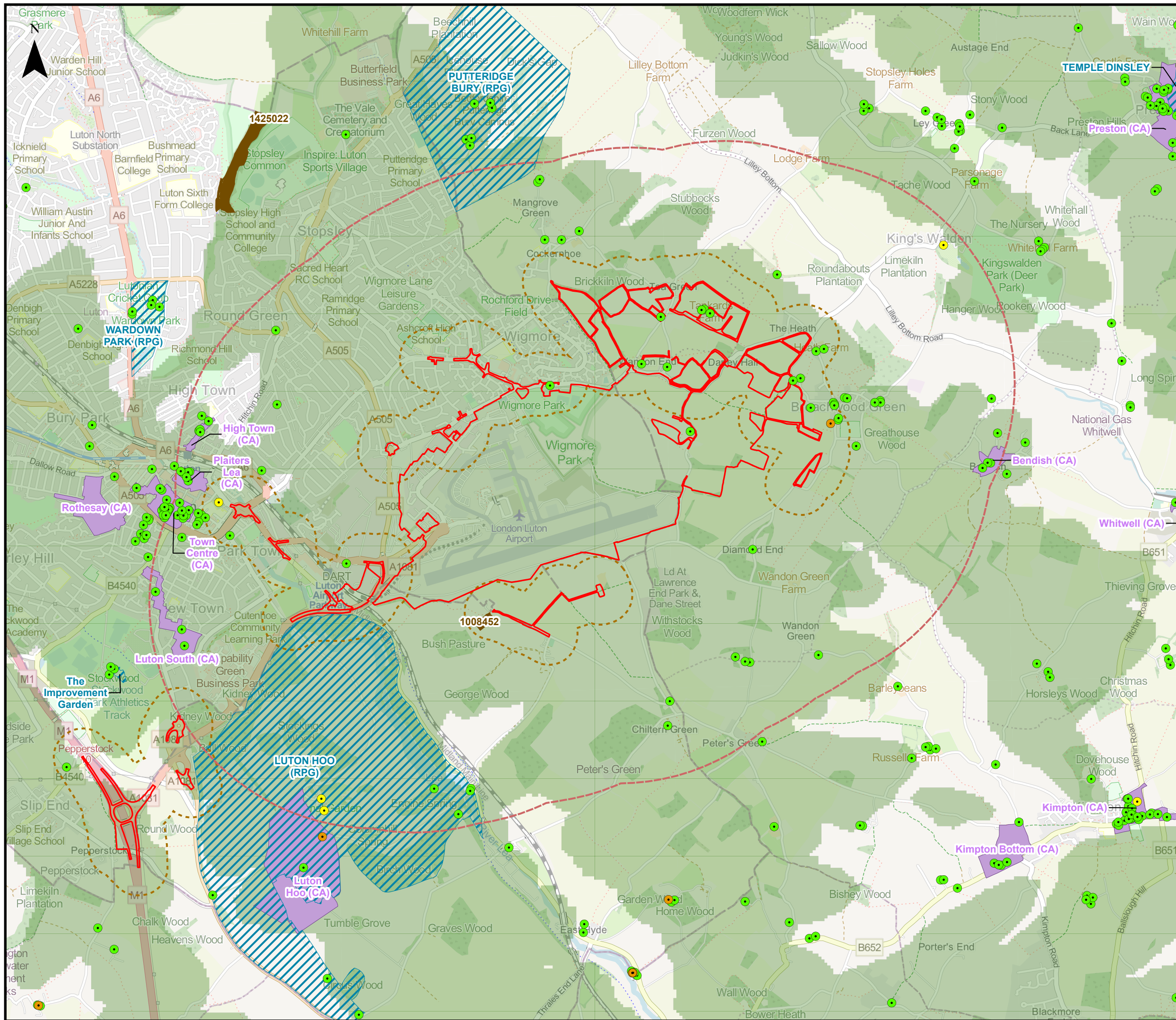
Drawing Title
Figure 10.8 Designated Heritage Assets Change in 2043 Do-Something - Do-Minimum Daytime LAeq,16h Air Noise Contours

Purpose of issue SUITABLE FOR INFORMATION				Suitability S2	
Drawn MAB	Checked JW	Approved CS	Date 31/01/23	Scale 1:95,000	Size A3

DCO Application Ref. TR020001	APFP Regulation APFP 5(2)(a)	DCO Document Ref. TR020001/APP/5.03
----------------------------------	---------------------------------	--

Drawing Number LLADCO-3C-AEC-00-00-DR-LM-0010	Revision P01
--	-----------------

Project - Phase - Originator - Asset/Zone - Sub Asset - Type- Discp. - Number



This drawing may contain mapping by permission of Ordnance Survey on behalf of HMSO © Crown Copyright and database rights 2022 Ordnance Survey 0100031673

All structure positions are indicative. The proposed works will be subject to detailed design development. The changes will be within limits of deviation specified in the Development Consent Order.

Legend

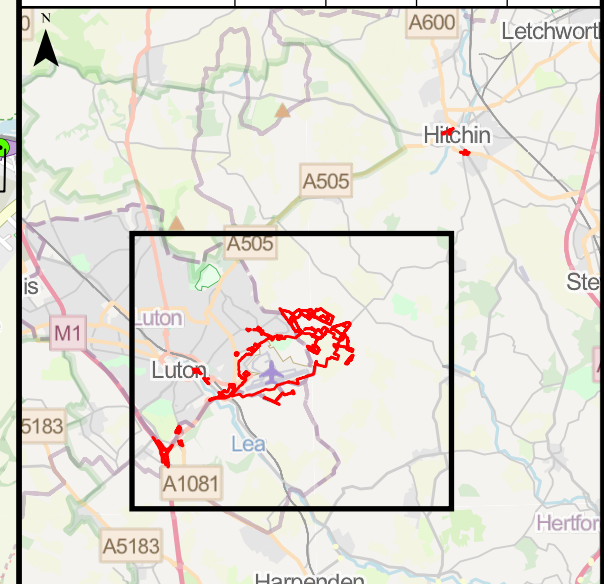
- Order Limits
- 250m Off-site Highways Interventions and Planting Study Area
- 2km Main Application Site Study Area
- Zone of Theoretical Visibility of the Proposed Development
- Conservation Areas (CA)
- Registered Park And Garden (RPG)
- Scheduled Monument

Listed Buildings - Grade

- I
- II*
- II

Map data © OpenStreetMap contributors, Microsoft, Facebook, Inc. and its affiliates, Esri Community Maps contributors, Map layer by Esri. © Historic England 2022. Contains Ordnance Survey data © Crown copyright and database right 2022. The Historic England GIS Data contained in this material was obtained on August 2022. The most publicly available up to date Historic England GIS Data can be obtained from HistoricEngland.org.uk. Contains Ordnance Survey Data © Crown Copyright and database right 2022.

First Issue	MAB	JW	CS	31/01/23	P01
Revision History	Drawn	Checked	Approved	Date	Rev.



Luton Rising
 Our airport. Our community. Our planet.
 Luton Rising
 Hart House Business Centre
 Kimpton Road, Luton, LU2 0LA
 www.lutonrising.org.uk

**London Luton Airport Expansion
 Development Consent Order**

Drawing Title
**Figure 10.9
 Designated Heritage Assets within
 the Zone of Theoretical Visibility (ZTV)**

Purpose of issue				Suitability	
SUITABLE FOR INFORMATION				S2	
Drawn	Checked	Approved	Date	Scale	Size
MAB	JW	CS	31/01/23	1:32,000	A3

DCO Application Ref.	APFP Regulation	DCO Document Ref.
TR020001	APFP 5(2)(a)	TR020001/APP/5.03

Drawing Number	Revision
LLADCO-3C-AEC-00-00-DR-LM-0012	P01

Project - Phase - Originator - Asset/Zone - Sub Asset - Type- Discp. - Number